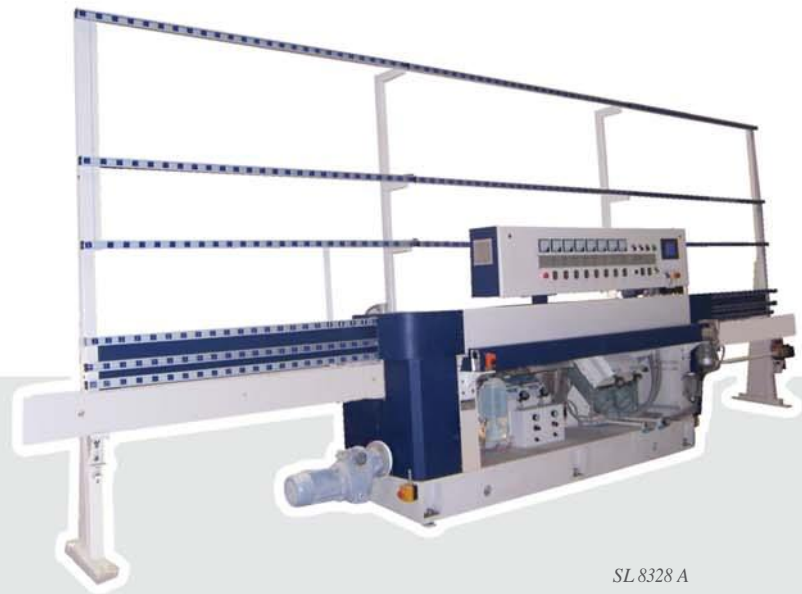


Straight Line Edgers



Vetrocraft

SL 8328 A

- ✓ Easy to operate
- ✓ Modular design
- ✓ For glass thicknesses ranging from 3 - 28 mm
- ✓ Continuously adjustable feed motion speed
- ✓ All automatic machines with touch screen display
- ✓ Available with 4 to 9 spindles

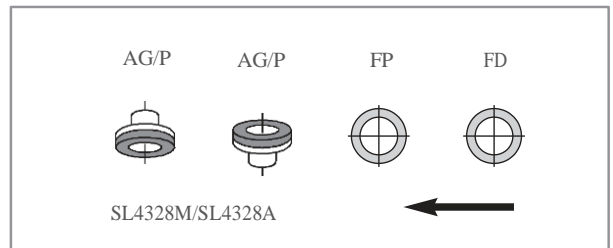
Vetrocraft Straight Line Edgers

for grinding, polishing and arissing

Vetrocraft SL4328M

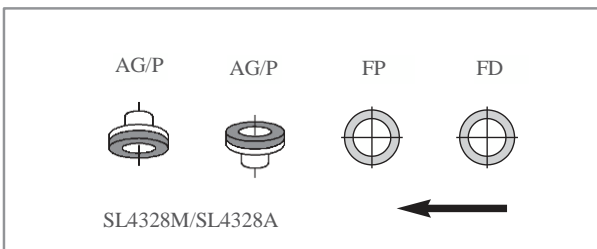


- Manual starter model with basic features
- Continuously adjustable belt speed
- Glass thickness 3 - 28 mm
- Max. pane size 1500 x 2500 mm
- 4 spindles

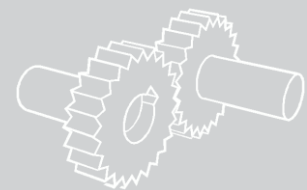


Vetrocraft SL4328A

- Automatic starter model
- Touch screen display
- Continuously adjustable belt speed
- Glass thickness 3-28 mm
- Max. pane size 1500 x 2500 mm
- 4 spindles



Why a Vetrocraft straight line edger?

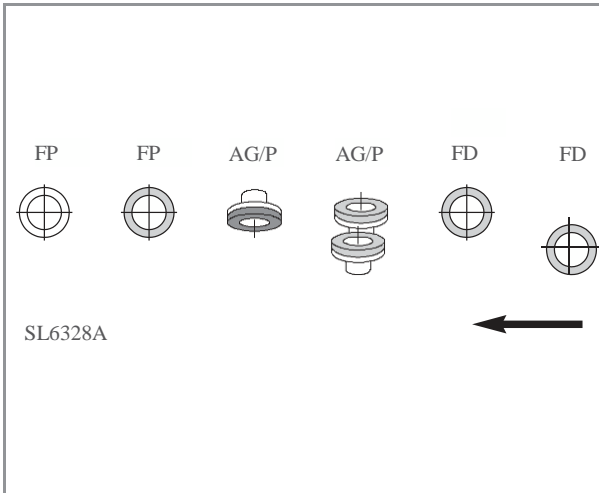


- | | |
|--|--|
| <ul style="list-style-type: none"> ■ Unbeatable value for money ■ Simple and robust design ■ Low investment required ■ | <ul style="list-style-type: none"> ■ Excellent edge quality ■ Low maintenance costs ■ A real alternative to other processing methods ■ |
|--|--|

Vetrocraft Straight Line Edgers

high edge quality, low investment

Vetrocraft SL6328A

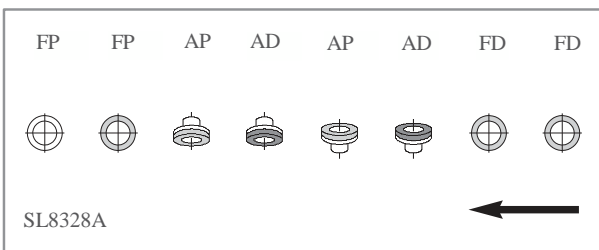


Automatic model with touch screen display

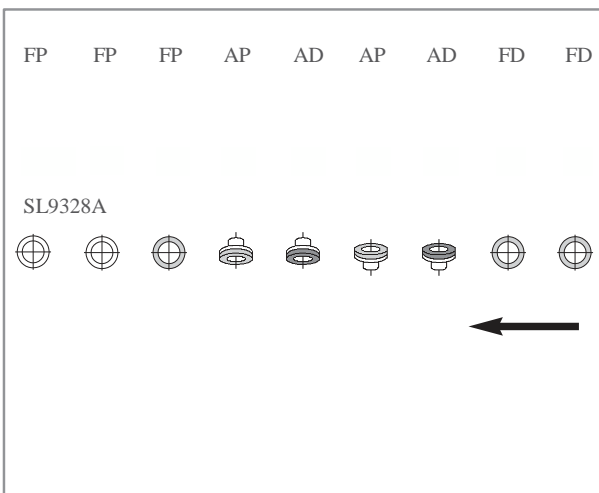
- 4-fold edge processing for optimal edge
- quality Pane dimensions up to 2000 x 3000
- mm Pneumatic operation of edge polishing wheel
- 6 spindles

Vetrocraft SL8328A

- Automatic model with touch screen display
- 4-fold edge and arris processing
- Pane dimensions up to 2000 x 3000 mm
- Pneumatic operation of edge polishing wheel
- 8 spindles



Vetrocraft SL9328A



Like SL8328A, but with additional spindle for superfine edge polishing (9 spindles)

- Alternative use of a felt disc with separate cerium supply from an additional tank possible
- Pneumatic operation of edge polishing wheel

- FD Grind Edge
- FP Polish Edge
- AD Grind Arris
- AP Polish Arris
- AG/P Grind or Polish Arris

Technical Data

Straight Line Edgers

	BO SL4328M	BO SL4328A	BO SL6328A	BO SL8328A	BO SL9328A
Number of spindles	4	4	6	8	9
Glass thickness (mm)	3 - 28				
Glass thickness adjustment	manual		semi-automatic via PLC		
Speed (m/min)	continuously 0.8 - 3				
Max bevel (mm)	3 x 45°				
Min. pane dimensions (mm)	80 x 80				
Max. pane dimensions (mm)	1500 x 2500		2000 x 3000, max. 19 mm		
Capacity (kW)	7.5	7.5	11	13.8	19
Power connection	400V/50Hz-3NPE				
Compressed air connection	6 bar				
Dimensions L x W x H (mm)	5600 x 1600 x 2100	5600 x 1600 x 2100	6500 x 1600 x 2500	6500 x 1600 x 2600	7000 x 1500 x 2500
Weight (kg)	1800	1800	2200	3200	3500

Subject to changes in line with technical progress!