

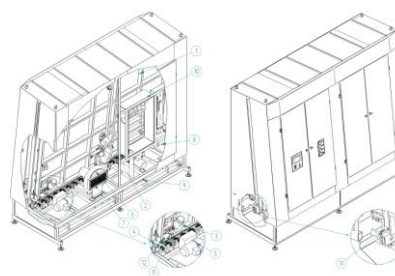
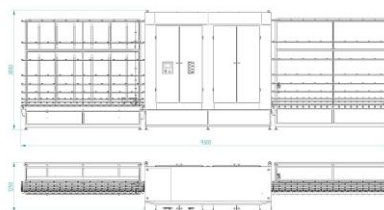


MGLP 2200 Total IG line with Sheet press

- ✓ Capacity of the line: ~800 db/8h
- ✓ PLC control, operation by touch-screen control panel
- ✓ Standard working direction left to right
- ✓ Chain driven transportation for unique and heavy glass sheets
- ✓ Special Vulcollan rollers, which can be used two times (reversible)
- ✓ Closed top washing machine
- ✓ Number of brushes suitable for washing low-e glasses: 6 pcs
- ✓ Brushes with changeable, reversible segments
- ✓ Special bearing with double line gasket of the brushes
- ✓ Wet parts of washing machine, water tank, brush shafts are stainless acid proof steel
- ✓ Adjustable speed: 0,1 - 6 m/min
- ✓ Number of separate washing sections: 4 pcs (2 x pre-wash, wash, rinse)
- ✓ Number of water tanks / pumps: 3 / 3
- ✓ Number of water filters: 6
- ✓ Automatic water supply system
- ✓ Centralized water control, overflow system
- ✓ Heat able pre-washing tank
- ✓ Sound insulated air fan is providing warm air (30-35 °C) for drying
- ✓ Antistatic separation in the drying section
- ✓ Assembly station: automatic positioning
- ✓ Assembly of the spacer with the aid of positioners: manual
- ✓ Double speed conveyor
- ✓ Fitting in the press and pressing: automatic
- ✓ Air cushion for glass movement
- ✓ Vacuum pump and grippers for glass fixing
- ✓ Pressing by pneu - ball screw system (0,01 mm accuracy)
- ✓ Pressing force adjustment for different glass sizes: automatic
- ✓ Smallest glass size: ~L300 x H250mm
- ✓ Largest glass size: ~L3000 x H2200mm
- ✓ Pressing thickness: 10-50mm
- ✓ Suitable for double or triple glazed units, structured units as an option
- ✓ End switch sensor on the outlet conveyor can be disabled (for long glass sheets)

TECHNICAL DATA:

- Supply: 3 x 400 V
- Frequency: 50 Hz
- Total power: 16 kW
- Compressed air: 6 Bar, 350 l/min
- Length: 17 600 mm
- Width: 2 000 mm
- Height: 3 000 mm
- Weight: 3 500 kg
- Noise level: 78 dB
- Transportation sizes (mm):
 - L2500xW850xH2800 - 120kg
 - L2800xW1500xH2850 - 1300kg
 - L3000xW850xH2800 - 180kg
 - L3000xW850xH2800 - 220kg
 - L3280xW1500xH2900 - 1800kg
 - L3000xW850xH2800 - 180kg



Price list - Options:

- | | |
|-----------------------------------------------------|------------------------|
| • Production of triple glazed IG units: | 980 EUR |
| • Structured units | 5 980 EUR |
| • Tilttable outlet conveyor: | 4 800 EUR |
| • Changing of the working direction: | 10 % of the base price |
| • Heating in the first tank | 360 EUR |
| • Automatic Low-E side control: | 980 EUR |
| • Washing of glass thickness up to 19 mm: | 1 400 EUR |
| • Washing of glass thickness up to 40 mm: | 9 800 EUR |
| • Reverse conveying the glass from the press | 400 EUR |
| • Remote service possibility by internet connection | 1 000 EUR |

